

## BLUESTAR PRO-LINE HOOD SERIES

With over 130 years of experience making cooking equipment, and as the leading manufacturer of high-performance commercial-style ranges for the home, BlueStar is now proud to offer a line of commercial-grade stainless steel hoods.

The perfect compliment to a BlueStar range or cooktop, BlueStar's Pro-Line Hood Series combines heavy-duty construction with seamless design to produce a hood with uncompromised durability, functionality, and beauty. And with 190 standard colors from which to choose, it's easy to match any kitchen's color scheme.

### Pro-Line Hood Features

- Available in 30", 36", 42", 48", 54", 60", and 66" width sizes.
- All sizes available with up to 1200 CFM.
- Commercial grade 18 gauge 300 stainless steel construction.
- Welded seamless construction.
- Dishwasher safe stainless steel baffle filters.
- Variable blower control.
- Halogen lamps with dimmer control.
- Reversible top or rear exhaust.
- Largest filtered capture in the industry.
- Available in 190 colors.



▲ Model BS-PL30240 in Stainless Steel



▲ Model BS-PL36240 in Red Wine (RAL 3005)

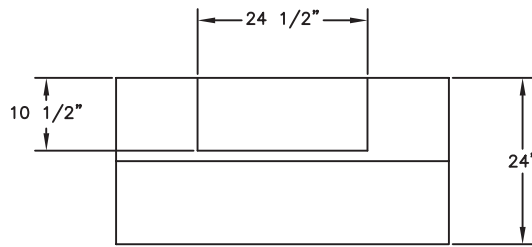
### Pro-Line Hood Models

| Model      | Size               | Material        | CFM             |
|------------|--------------------|-----------------|-----------------|
| BS-PL30240 | 30"W x 24"D x 18"H | Stainless Steel | 600 or 1200 CFM |
| BS-PL36240 | 36"W x 24"D x 18"H | Stainless Steel | 600 or 1200 CFM |
| BS-PL42240 | 42"W x 24"D x 18"H | Stainless Steel | 1200 CFM        |
| BS-PL48240 | 48"W x 24"D x 18"H | Stainless Steel | 1200 CFM        |
| BS-PL54240 | 54"W x 24"D x 18"H | Stainless Steel | 1200 CFM        |
| BS-PL60240 | 60"W x 24"D x 18"H | Stainless Steel | 1200 CFM        |
| BS-PL66240 | 66"W x 24"D x 18"H | Stainless Steel | 1200 CFM        |

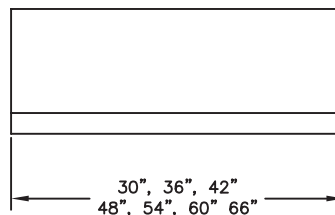
# BLUESTAR PRO-LINE HOOD SERIES

## Standard Features

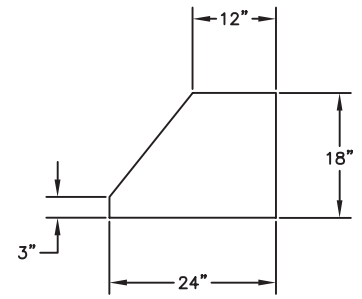
- Commercial grade 18 gauge 300 stainless steel construction.
- Welded seamless construction.
- Dishwasher safe stainless steel baffle filters.
- Variable blower control.
- Halogen lamps with dimmer control.
- Reversible top or rear exhaust.
- Largest filtered capture in the industry.



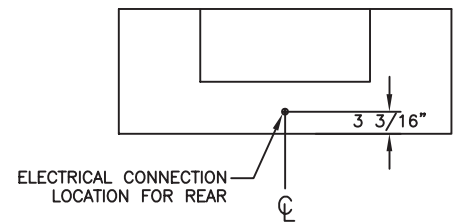
TOP VIEW



FRONT VIEW



RT SIDE VIEW



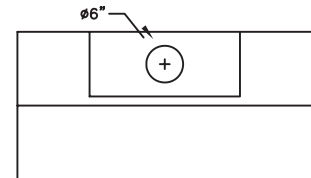
ELECTRICAL CONNECTION LOCATION FOR REAR

BACK VIEW

## Electrical Requirements

- 15 amps at 120 volts.
- Light bulbs are PAR 16 60 watt halogen.
- Blowers must be purchased separately.

▶ 600 CFM BLOWER



▶ 1200 CFM BLOWER  
w/ TR6 X 15/8 Transition  
Required

