

BlueStar Refrigerator Installation Instructions—Do Not Discard

⚠ WARNING

Follow these basic precautions:

- Plug into a grounded three-prong outlet.
- Do not remove ground prong.
- Do not use an adapter.
- Do not use an extension cord.
- Disconnect power before servicing.
- Replace all parts and panels before operating.
- Remove doors from your old refrigerator.
- Use nonflammable cleaner.
- Keep flammable materials and vapors, such as gasoline, away from refrigerator.
- Use two or more people to move and install refrigerator.

⚠ WARNING

The refrigerator is top heavy and tips easily when not completely installed. Use two or more people to move and install the refrigerator.

Tools and Materials

- Phillips screwdriver
- Power drill and drill bits (for anchor bracket)
- Stud finder
- 1/2" socket wrench
- Tubing cutter
- 3' of 1/4" OD copper, braided stainless steel, or PEX tubing
- Saddle valve
- 1/2" open end wrench
- 5/16" hex head socket

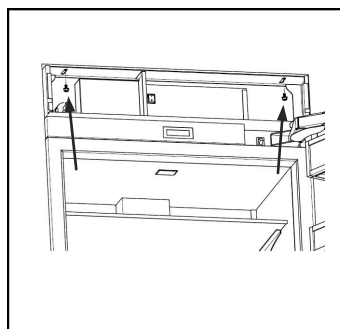
Before starting the installation, uncrate and inspect the unit. Remove packing materials but do not discard anchor bracket, toe grille, and associated hardware.

Step 1 — Install Anchor Bracket

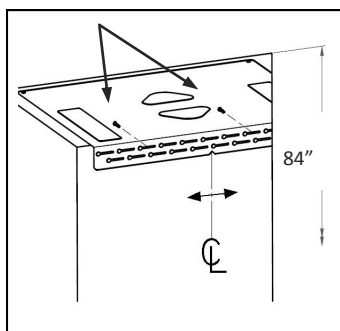
⚠ WARNING

The anchor bracket must be installed properly to prevent the refrigerator from tipping.

- The anchor bracket is attached to the top of the unit during shipping. Remove it by lifting the top grille and removing the two 1/2" bolts. Save the bolts to use when anchoring the unit in the final position.



- Install the anchor bracket on the back wall of the opening. The notch in the back of the bracket should be centered in the opening (from side to side). Secure the anchor bracket with at least two screws spaced far apart, close to the sides of the bracket. Screws must be securely threaded into wood or metal studs that are structurally sound and part of the building structure.



Step 2 — Connect Water Line

- Remove the wood base and discard the shipping bolts and brackets. Use an appliance cart to move the unit near the front of the opening. Ensure the leveling legs are retracted to allow the unit to be rolled into position. Front and rear leveling can be done from the front once the unit is in position.

Important: If the unit has been on its back or side, it must stand upright for a minimum of 24 hours before connecting power.

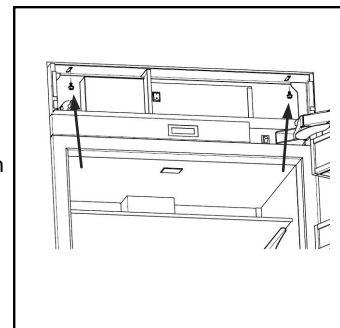
- Place the sleeve and nut on the water line under the unit and fasten it to the connection at the end of the tubing. Do not over-tighten. Check all water line fittings for leaks. If using a reverse osmosis system, do not install the water filter. A bypass plug is not necessary as there is an internal bypass circuit, which eliminates the need for a separate plug.

Step 3 — Move Unit into Position

- Plug the power cord into the grounded outlet and roll the unit into position, ensuring the power cord and water line do not interfere at the back.

Important: If the floor is not level, it may be necessary to level the unit prior to rolling it into the opening. See step 4 on leveling to temporarily tilt the unit. Final leveling can be done from the front.

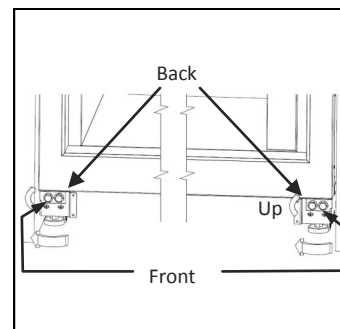
- Lift the top grille and align the slots in the upper cabinet with the holes in the anchor bracket. Install 1/2" anchor bolts with lock washers but do not tighten until leveling is complete.



Important: If the mounting holes do not align with the slots in the top of the cabinet behind the top grille, it may be necessary to roll the unit out of the opening, loosen the anchor bracket screws on the back wall, slide the bracket left or right, and retighten the screws.

Step 4 — Level Unit

- The height adjustment for the front and back can be made from the front of the refrigerator. Turn the hex bolt clockwise with a 1/2" socket wrench to raise the unit or counterclockwise to lower it. The unit is designed to raise a maximum of 1" from the shipped position. Do not attempt to raise the unit beyond that point as damage to the leveling system will occur.



Important: Do not use a power drill and do not over-tighten the leveling bolts. Level the unit to the floor, not the surrounding cabinetry, as this could affect door closing. When the unit is properly leveled, door and drawer adjustment are less likely to be necessary.

⚠ WARNING

The front leveling legs must be firmly in contact with the floor to reduce the possibility of the refrigerator tipping forward.

- Once the unit is level, extend the front feet to the floor and hand-tighten an additional half turn. These feet will help stabilize the unit.

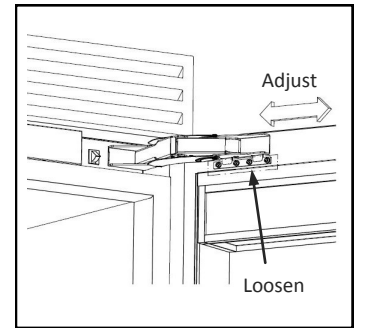
Step 5 — Align Doors and Top Grille (if necessary)

Only adjust the doors and/or top grille if is necessary to achieve uniform gaps and proper alignment.

Refrigerator Door

Important: Adjust the top hinge or bottom hinge bolts. Do not loosen the top and bottom hinge bolts at the same time.

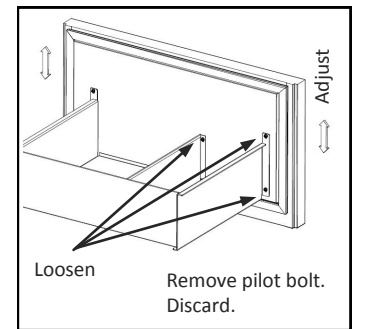
- Loosen four bolts with a 5/16" hex head socket.
- Slide door left or right as necessary to achieve uniform gaps on the sides and/or between the upper door and lower drawer.
- Retighten the bolts. Bolts need to be tightened to 50 in. lb. It is normal for the door to lower and tilt slightly when loaded with food.
- Repeat process for the bottom of the door if necessary.



Freezer Drawer

Important: Adjust one side at a time.

- Remove the middle bolt from the side mounting bracket with a 5/16" hex head socket. Discard the bolt as it is a pilot screw for initial assembly only.
- Loosen the remaining two bolts from the side mounting bracket and the divider screw from the center of the drawer.
- Slide the door up or down as necessary to achieve uniform gaps between the upper door and lower drawer.
- Retighten the bolts. Bolts need to be tightened to 50 in. lb.
- Repeat process as necessary for the other side.



Top Grille

- Top grille can be adjusted vertically where hinge attaches to the grille. Grille can be adjusted horizontally where hinge base is attached to the upper cabinet frame.
- Loosen Phillips screws and adjust grille as needed. Retighten screws.

Step 6 — Anchor Unit and Install Toe Grille

- Tighten the 1/2" anchor bolts through the top of the cabinet to the anchor brackets with a 1/2" socket wrench. Close the top grille.
- Attach the upper toe grille to the brackets at the base of the unit with one black Phillips screw on each side. Brackets may be adjusted side to side if necessary to improve the fit to the opening.
- Attach the lower toe grille using one black Phillips screw on each side. Bottom of the toe grille should rest on the floor.

