



2023 DESIGN GUIDE
COLUMN REFRIGERATORS & FREEZERS



★ BLUESTAR

Power
41°F
Light
Alarm

- 2. 30" Column Refrigerators & Freezers
- 6. 24" Column Refrigerators & Freezers
- 10. 18" Column Freezers
- 13. Joined Column Cutout Dimensions
- 15: Panel Detail
- 16: Continuous Toekicks & Accessories
- 17: Custom Toekick Detail

30" COLUMN REFRIGERATOR | PANEL READY

PRODUCT FEATURES:

- Industry-leading 17.44 cu. ft. capacity
- Stainless steel & glass interiors
- Available in panel-ready with available integrated stainless steel panels in your choice of 1000+ colors, all with flush installation
- Advanced temperature control for longer food preservation
- Touch screen control with Sabbath & Shopping modes
- Extra-bright LED lighting
- Fully extending crisper drawers
- Slide-out tray that fits sheet pan
- Iron Clad Warranty: 2 years (full), 5 years (sealed system parts & labor) and 13 years (sealed system parts)
- Side by side kits included with all freezer models. Kits for side by side refrigerators available separately
- 90 Degree Pins must be specified at time of order. Can not be added after installation.



Model: BIRP30R0



Model: BIRP30R0
with CP30RH1



Model: BIRP30R0
with CP30RH1CPLT

SPECIFICATIONS:

Dimensions:

- Panel Ready: 83 1/2"H x 29 3/8"W x 24 1/4"D
 - * Overall depth does not include panel depth
 - * Width includes connector brackets

Electrical Requirements: 115V, 60Hz, 15 AMP Circuit

(Unit must be on a Non-GFI, dedicated outlet)

Unit Capacity: 17.44 cu. ft.

Weight: 445 lbs.

CONFIGURATIONS:

Right Swing Model Plus Stainless Door Panel Assembly:

BIRP30R0	Panel Ready
CP30RH1	Right Door Panel Stainless Steel Std Trim
CP30RH1PLT	Right Door Panel Stainless Steel Plated Trim
CP30RH1C	Right Door Panel Std RAL Color Std Trim
CP30RH1CPLT	Right Door Panel Std RAL Color Plated Trim
CP30RH1CF	Right Door Panel Specialty Finish Std Trim
CP30RH1CFPLT	Right Door Panel Specialty Finish Plated Trim
CP30RH1CC	Right Door Panel Custom Color Std Trim
CP30RH1CCPLT	Right Door Panel Custom Color Plated Trim

Left Swing Model Plus Stainless Door Panel Assembly:

BIRP30L0	Panel Ready
CP30LH1	Left Door Panel Stainless Steel Std Trim
CP30LH1PLT	Left Door Panel Stainless Steel Plated Trim
CP30LH1C	Left Door Panel Std RAL Color Std Trim
CP30LH1CPLT	Left Door Panel Std RAL Color Plated Trim
CP30LH1CF	Left Door Panel Specialty Finish Std Trim
CP30LH1CFPLT	Left Door Panel Specialty Finish Plated Trim
CP30LH1CC	Left Door Panel Custom Color Std Trim
CP30LH1CCPLT	Left Door Panel Custom Color Plated Trim

30" COLUMN FREEZER | PANEL READY

PRODUCT FEATURES:

- Industry-leading 16.84 cu. ft. capacity
- Stainless steel & glass interiors
- Available in panel-ready with available integrated stainless steel panels in your choice of 1000+ colors, all with flush installation
- Automatic ice maker with Super Ice function
- Easy-to-use touch control panel
- Extra-bright LED lighting
- Stainless steel full extension drawers
- Iron Clad Warranty: 2 years (full), 5 years (sealed system parts & labor) and 13 years (sealed system parts)
- Side by side kits included with all freezer models
- 90 Degree Pins must be specified at time of order. Can not be added after installation.



Model: BIFP30R0



Model: BIFP30R0
with CP30RH1



Model: BIFP30R0
with CP30RH1CPLT

SPECIFICATIONS:

Dimensions:

- Panel Ready: 83 1/2"H x 29 3/8"W x 24 1/4"D

** Overall depth does not include panel depth*

** Width includes connector brackets*

Electrical Requirements: 115V, 60Hz, 15 AMP Circuit

(Unit must be on a Non-GFI, dedicated outlet)

Water Pressure: 35 - 120 psi

Unit Capacity: 16.84 cu. ft.

Weight: 445 lbs.

CONFIGURATIONS:

Right Swing Model Plus Stainless Door Panel Assembly:

BIFP30R0	Panel Ready
CP30RH1	Right Door Panel Stainless Steel Std Trim
CP30RH1PLT	Right Door Panel Stainless Steel Plated Trim
CP30RH1C	Right Door Panel Std RAL Color Std Trim
CP30RH1CPLT	Right Door Panel Std RAL Color Plated Trim
CP30RH1CF	Right Door Panel Specialty Finish Std Trim
CP30RH1CFPLT	Right Door Panel Specialty Finish Plated Trim
CP30RH1CC	Right Door Panel Custom Color Std Trim
CP30RH1CCPLT	Right Door Panel Custom Color Plated Trim

Left Swing Model Plus Stainless Door Panel Assembly:

BIFP30L0	Panel Ready
CP30LH1	Left Door Panel Stainless Steel Std Trim
CP30LH1PLT	Left Door Panel Stainless Steel Plated Trim
CP30LH1C	Left Door Panel Std RAL Color Std Trim
CP30LH1CPLT	Left Door Panel Std RAL Color Plated Trim
CP30LH1CF	Left Door Panel Specialty Finish Std Trim
CP30LH1CFPLT	Left Door Panel Specialty Finish Plated Trim
CP30LH1CC	Left Door Panel Custom Color Std Trim
CP30LH1CCPLT	Left Door Panel Custom Color Plated Trim

INSTALLATION DIMENSIONS: 30" PANEL READY MODELS

- (A) Recommended cut-out height 83 1/2" - 84"
- (B) Dimensions shown are with rollers in minimum position as shipped.
Unit can be raised 1" max.
- (C) Cut-out must have a finished return of at least 3 1/2" from the front.

Notes:

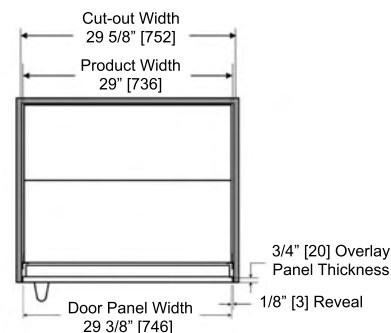
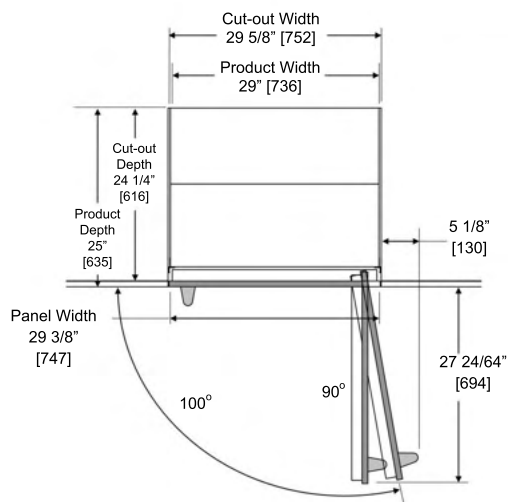
- Dimensions shown in [] are in millimeters.
- Product depth does not include 3/4" panel
- Cut-out dimensions are shown in frameless cabinet installations.
- All handle dimensions shown are Legacy handle (#RSK-1000083)

Installation Dimensions:

- Applicable to all 30" Panel Ready models.

- Dimensions are common for 30"

Left Swing models.



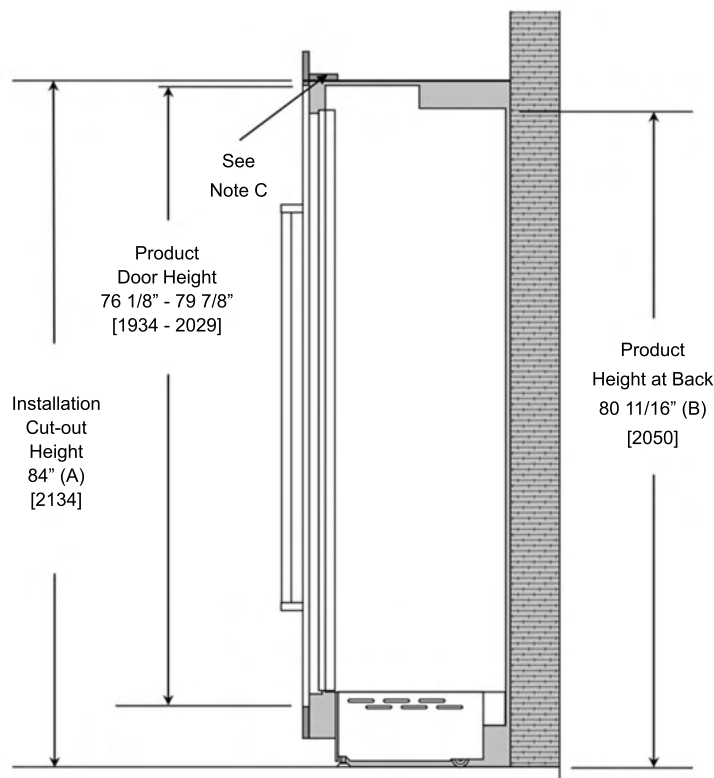
Installation Dimensions:

18", 24" & 30" Panel Ready Models including Custom Panel or

Stainless Steel Door Panel Assembly:

Notes: Dimensions shown in [] are in millimeters

- (A) Recommended cut-out height 83 1/2" - 84"
- (B) Dimensions shown are with rollers in minimum position as shipped.
Units can be raised 1" max.
- (C) Cut-out must have a finished return of at least 3 1/2" from the front.



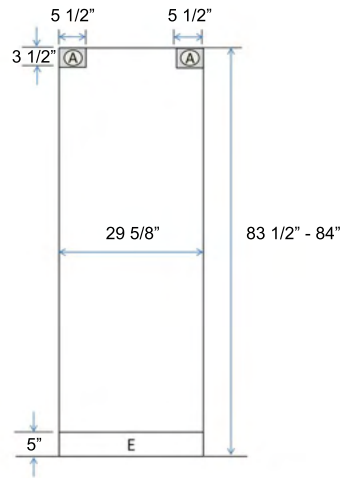
SITE PREPARATION GUIDE

- Electrical:** The electrical outlet should be located in the area marked "E" and must be on a dedicated non-GFI 115V, 60Hz, 15 Amp circuit and accept a three-prong grounding plug.
- Plumbing:** The water line should be located in the area marked "W". Connect the water line to the house water supply with an easily accessible shut-off valve.
- Mounting:** "A" equals area to be left clear for anti-tip brackets. In addition, the plastic connecting brackets must be screwed to the cabinets all provided attachment points.

30" Column Models

Model(s):

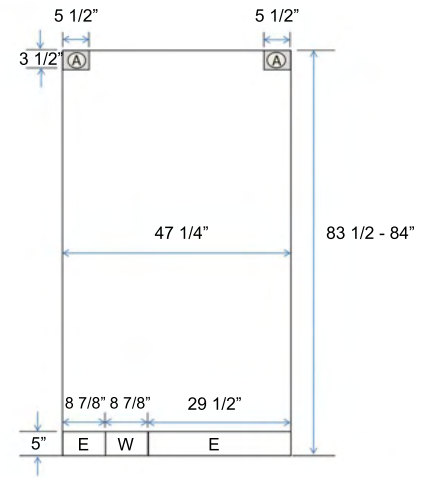
- BIRP30 models
- BIFP30 models



30" & 18" Column Models

Model(s):

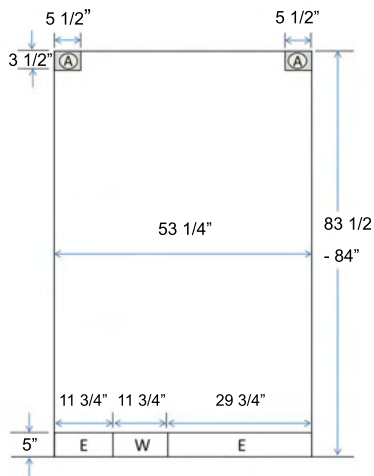
- BIRP30 models
- BIFP30 models
- BIFP18 models



30" & 24" Column Models

Model(s):

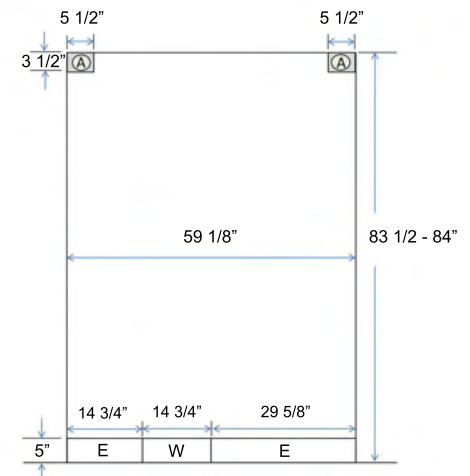
- BIRP30 models
- BIFP30 models
- BIRP24 models
- BIFP24 models



30" & 30" Column Models

Model(s):

- BIRP30 models
- BIFP30 models



24" COLUMN REFRIGERATOR | PANEL READY

PRODUCT FEATURES:

- Over-sized 12.99 cu. ft. capacity
- Stainless steel & glass interiors
- Available in panel-ready with available integrated stainless steel panels in your choice of 1000+ colors, all with flush installation
- Advanced temperature control for longer food preservation
- Touch screen control with Sabbath & Shopping modes
- Extra-bright LED lighting
- Fully extending crisper drawers
- Slide-out tray that fits sheet pan
- Iron Clad Warranty: 2 years (full), 5 years (sealed system parts & labor) and 13 years (sealed system parts)
- Side by side kits included with all freezer models. Kits for side by side refrigerators available separately
- 90 Degree Pins must be specified at time of order. Can not be added after installation.



Model: BIRP24R0



Model: BIRP24R0
with CP24RH1



Model: BIRP24R0
with CP24RH1CPLT

SPECIFICATIONS:

Dimensions:

- Panel Ready: 83 1/2"H x 23 5/8"W x 24 1/4"D
 - * Overall depth does not include panel depth
 - * Width includes connector brackets

Electrical Requirements: 115V, 60Hz, 15 AMP Circuit

(Unit must be on a Non-GFI, dedicated outlet)

Unit Capacity: 12.99 cu. ft.

Weight: 364 lbs.

CONFIGURATIONS:

Right Swing Model Plus Stainless Door Panel Assembly:

BIRP24R0	Panel Ready
CP24RH1	Right Door Panel Stainless Steel Std Trim
CP24RH1PLT	Right Door Panel Stainless Steel Plated Trim
CP24RH1C	Right Door Panel Std RAL Color Std Trim
CP24RH1CPLT	Right Door Panel Std RAL Color Plated Trim
CP24RH1CF	Right Door Panel Specialty Finish Std Trim
CP24RH1CFPLT	Right Door Panel Specialty Finish Plated Trim
CP24RH1CC	Right Door Panel Custom Color Std Trim
CP24RH1CCPLT	Right Door Panel Custom Color Plated Trim

Left Swing Model Plus Stainless Door Panel Assembly:

BIRP24L0	Panel Ready
CP24LH1	Left Door Panel Stainless Steel Std Trim
CP24LH1PLT	Left Door Panel Stainless Steel Plated Trim
CP24LH1C	Left Door Panel Std RAL Color Std Trim
CP24LH1CPLT	Left Door Panel Std RAL Color Plated Trim
CP24LH1CF	Left Door Panel Specialty Finish Std Trim
CP24LH1CFPLT	Left Door Panel Specialty Finish Plated Trim
CP24LH1CC	Left Door Panel Custom Color Std Trim
CP24LH1CCPLT	Left Door Panel Custom Color Plated Trim

24" COLUMN FREEZER | PANEL READY

PRODUCT FEATURES:

- Over-sized 12.64 cu. ft. capacity
- Stainless steel & glass interiors
- Available in panel-ready with available integrated stainless steel panels in your choice of 1000+ colors, all with flush installation
- Automatic ice maker with Super Ice function
- Easy-to-use touch control panel
- Extra-bright LED lighting
- Stainless steel full extension drawers
- Iron Clad Warranty: 2 years (full), 5 years (sealed system parts & labor) and 13 years (sealed system parts)
- Side by side kits included with all freezer models
- 90 Degree Pins must be specified at time of order. Can not be added after installation.

SPECIFICATIONS:

Dimensions:

- Panel Ready: 83 1/2"H x 23 5/8"W x 24 1/4"D

** Overall depth does not include panel depth*

** Width includes connector brackets*

Electrical Requirements: 115V, 60Hz, 15 AMP Circuit

(Unit must be on a Non-GFI, dedicated outlet)

Water Pressure: 35 - 120psi

Unit Capacity: 12.64 cu. ft.

Weight: 364 lbs.



Model: BIFP24R0



Model: BIFP24R0
with CP24RH1



Model: BIFP24R0
with CP24RH1CPLT

CONFIGURATIONS:

Right Swing Model Plus Stainless Door Panel Assembly:

BIFP24R0	Panel Ready
CP24RH1	Right Door Panel Stainless Steel Std Trim
CP24RH1PLT	Right Door Panel Stainless Steel Plated Trim
CP24RH1C	Right Door Panel Std RAL Color Std Trim
CP24RH1CPLT	Right Door Panel Std RAL Color Plated Trim
CP24RH1CF	Right Door Panel Specialty Finish Std Trim
CP24RH1CFPLT	Right Door Panel Specialty Finish Plated Trim
CP24RH1CC	Right Door Panel Custom Color Std Trim
CP24RH1CCPLT	Right Door Panel Custom Color Plated Trim

Left Swing Model Plus Stainless Door Panel Assembly:

BIFP24L0	Panel Ready
CP24LH1	Left Door Panel Stainless Steel Std Trim
CP24LH1PLT	Left Door Panel Stainless Steel Plated Trim
CP24LH1C	Left Door Panel Std RAL Color Std Trim
CP24LH1CPLT	Left Door Panel Std RAL Color Plated Trim
CP24LH1CF	Left Door Panel Specialty Finish Std Trim
CP24LH1CFPLT	Left Door Panel Specialty Finish Plated Trim
CP24LH1CC	Left Door Panel Custom Color Std Trim
CP24LH1CCPLT	Left Door Panel Custom Color Plated Trim

INSTALLATION DIMENSIONS: 24" PANEL READY MODELS

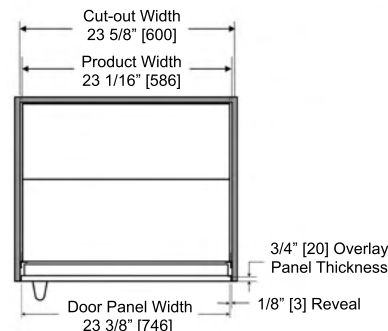
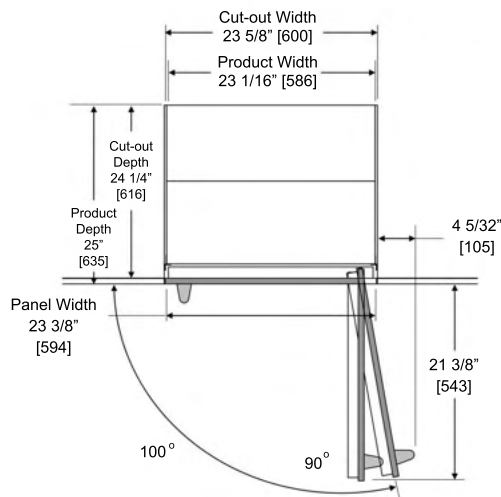
- (A) Recommended cut-out height 83 1/2" - 84"
- (B) Dimensions shown are with rollers in minimum position as shipped.
Unit can be raised 1" max.
- (C) Cut-out must have a finished return of at least 3 1/2" from the front.

Notes:

- Dimensions shown in [] are in millimeters.
- Product depth does not include 3/4" panel
- Cut-out dimensions are shown in frameless cabinet installations.
- All handle dimensions shown are Legacy handle (#RSK-1000083)

Installation Dimensions:

- Applicable to all 24" Panel Ready models.
- Dimensions are common for 24" Left Swing models.

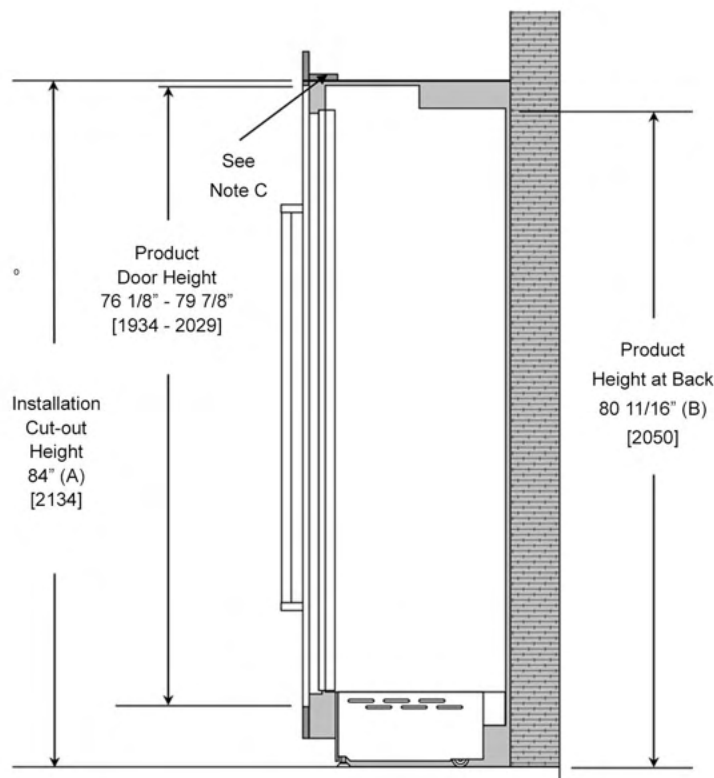


Installation Dimensions:

18", 24" & 30" Panel Ready Models including Custom Panel or Stainless Steel Door Panel Assembly:

Notes: Dimensions shown in [] are in millimeters

- (A) Recommended cut-out height 83 1/2" - 84"
- (B) Dimensions shown are with rollers in minimum position as shipped.
Units can be raised 1" max.
- (C) Cut-out must have a finished return of at least 3 1/2" from the front.



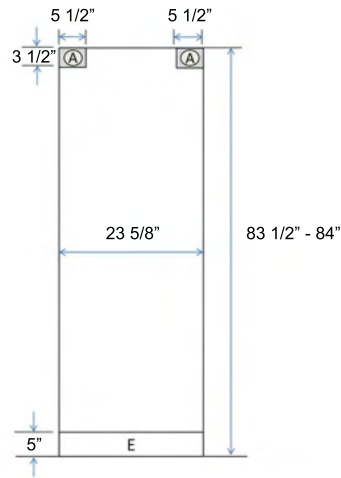
SITE PREPARATION GUIDE

- Electrical:** The electrical outlet should be located in the area marked "E" and must be on a dedicated non-GFI 115V, 60Hz, 15 Amp circuit and accept a three-prong grounding plug.
- Plumbing:** The water line should be located in the area marked "W". Connect the water line to the house water supply with an easily accessible shut-off valve.
- Mounting:** "A" equals area to be left clear for anti-tip brackets. In addition, the plastic connecting brackets must be screwed to the cabinets all provided attachment points.

24" Column Models

Model(s):

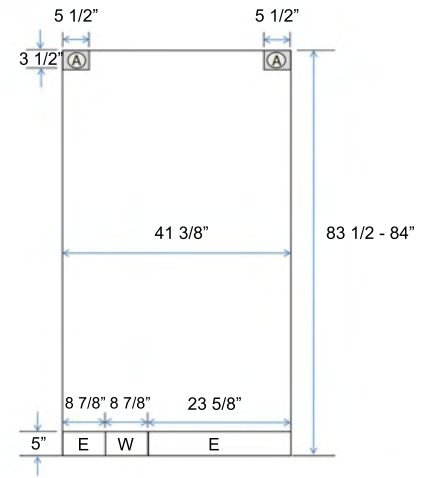
- BIRP24 models
- BIFP24 models



24" & 18" Column Models

Model(s):

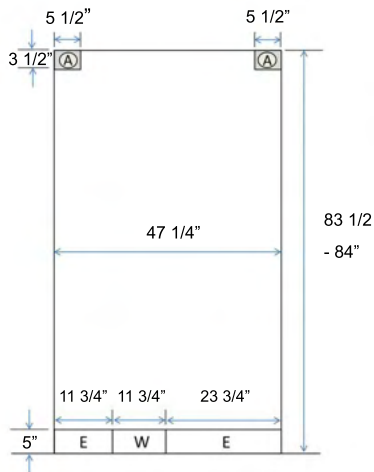
- BIRP24 models
- BIFP24 models
- BIFP18



24" & 24" Column Models

Model(s):

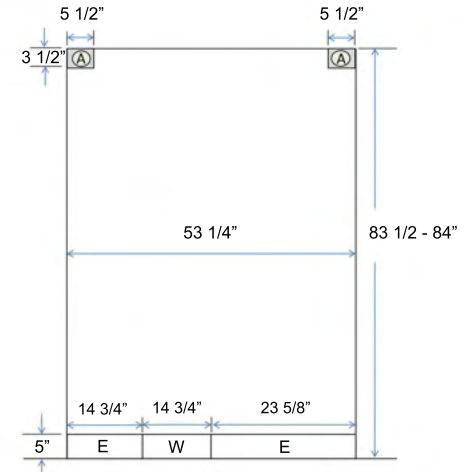
- BIRP24 models
- BIFP24 models



24" & 30" Column Models

Model(s):

- BIRP24 models
- BIFP24 models
- BIRP30 models
- BIFP30 models



18" COLUMN FREEZER | PANEL READY

PRODUCT FEATURES:

- Over-sized 8.22 cu. ft. capacity
- Stainless steel & glass interiors
- Available in panel-ready with available integrated stainless steel panels in your choice of 1000+ colors, all with flush installation
- Automatic ice maker with Super Ice function
- Easy-to-use touch control panel
- Extra-bright LED lighting
- Stainless steel full extension drawers
- Iron Clad Warranty: 2 years (full), 5 years (sealed system parts & labor) and 13 years (sealed system parts)
- Side by side kits included with all freezer models
- 90 Degree Pins must be specified at time of order. Can not be added after installation.



Model: BIFP18R0



Model: BIFP18R0
with CP18RH1



Model: BIFP18R0
with CP18RH1CPLT

SPECIFICATIONS:

Dimensions:

- Panel Ready: 83 1/2"H x 17 1/2"W x 24 1/4"D
 - * Overall depth does not include panel depth
 - * Width includes connector brackets

Electrical Requirements: 115V, 60Hz, 15 AMP Circuit

(Unit must be on a Non-GFI, dedicated outlet)

Water Pressure: 35 - 120psi

Unit Capacity: 8.22 cu. ft.

Weight: 342 lbs.

CONFIGURATIONS:

Right Swing Model Plus Stainless Door Panel Assembly:

BIFP18R0	Panel Ready
CP18RH1	Right Door Panel Stainless Steel Std Trim
CP18RH1PLT	Right Door Panel Stainless Steel Plated Trim
CP18RH1C	Right Door Panel Std RAL Color Std Trim
CP18RH1CPLT	Right Door Panel Std RAL Color Plated Trim
CP18RH1CF	Right Door Panel Specialty Finish Std Trim
CP18RH1CFPLT	Right Door Panel Specialty Finish Plated Trim
CP18RH1CC	Right Door Panel Custom Color Std Trim
CP18RH1CCPLT	Right Door Panel Custom Color Plated Trim

Left Swing Model Plus Stainless Door Panel Assembly:

BIFP18L0	Panel Ready
CP18LH1	Left Door Panel Stainless Steel Std Trim
CP18LH1PLT	Left Door Panel Stainless Steel Plated Trim
CP18LH1C	Left Door Panel Std RAL Color Std Trim
CP18LH1CPLT	Left Door Panel Std RAL Color Plated Trim
CP18LH1CF	Left Door Panel Specialty Finish Std Trim
CP18LH1CFPLT	Left Door Panel Specialty Finish Plated Trim
CP18LH1CC	Left Door Panel Custom Color Std Trim
CP18LH1CCPLT	Left Door Panel Custom Color Plated Trim

INSTALLATION DIMENSIONS: 18" PANEL READY MODELS

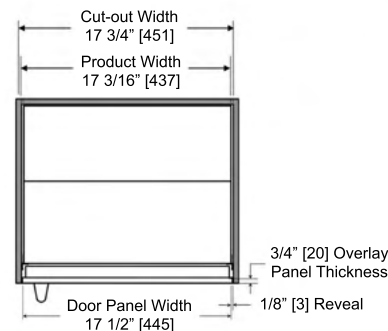
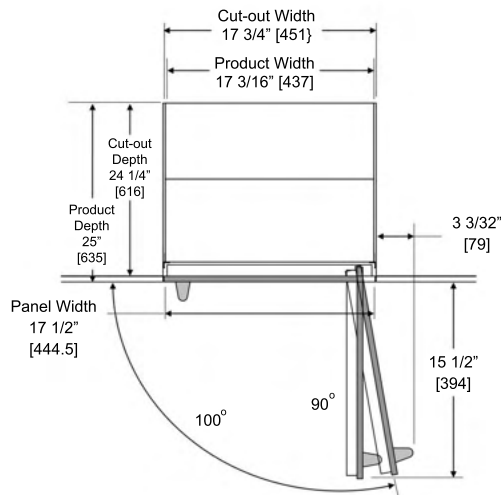
- (A) Recommended cut-out height 83 1/2" - 84"
- (B) Dimensions shown are with rollers in minimum position as shipped.
Unit can be raised 1" max.
- (C) Cut-out must have a finished return of at least 3 1/2" from the front.

Notes:

- Dimensions shown in [] are in millimeters.
- Product depth does not include 3/4" custom panel depth
- Cut-out dimensions are for frameless cabinet installations.

Installation Dimensions:

- Applicable to all 18" Panel Ready models.
- Dimensions are common for 18" Left Swing models.

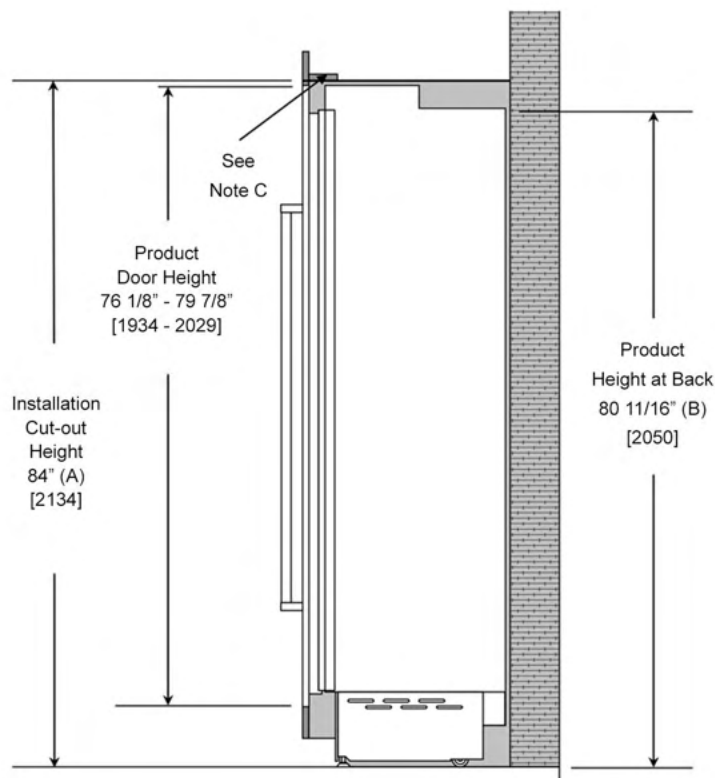


Installation Dimensions:

18", 24" & 30" Panel Ready Models including Custom Panel or Stainless Steel Door Panel Assembly:

Notes: Dimensions shown in [] are in millimeters

- (A) Recommended cut-out height 83 1/2" - 84"
- (B) Dimensions shown are with rollers in minimum position as shipped.
Units can be raised 1" max.
- (C) Cut-out must have a finished return of at least 3 1/2" from the front.



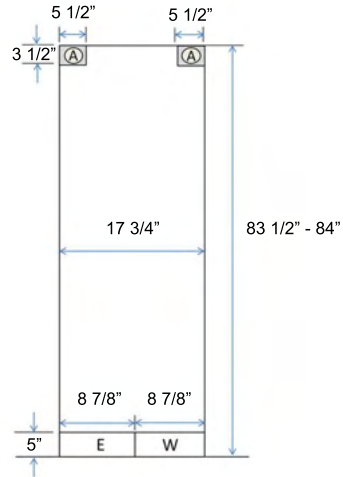
SITE PREPARATION GUIDE

- Electrical:** The electrical outlet should be located in the area marked "E" and must be on a dedicated non-GFI 115V, 60Hz, 15 Amp circuit and accept a three-prong grounding plug.
- Plumbing:** The water line should be located in the area marked "W". Connect the water line to the house water supply with an easily accessible shut-off valve.
- Mounting:** "A" equals area to be left clear for anti-tip brackets. In addition, the plastic connecting brackets must be screwed to the cabinets all provided attachment points.

18" Column Models

Model(s):

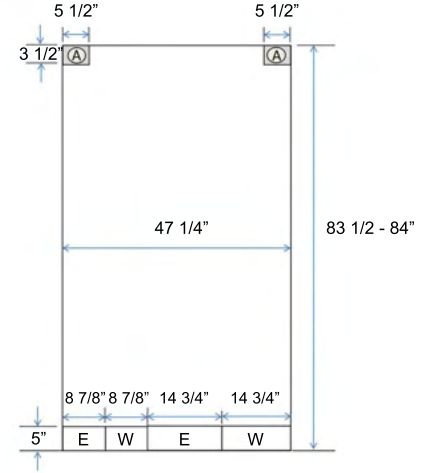
- BIFP18 models



30" & 18" Column Models

Model(s):

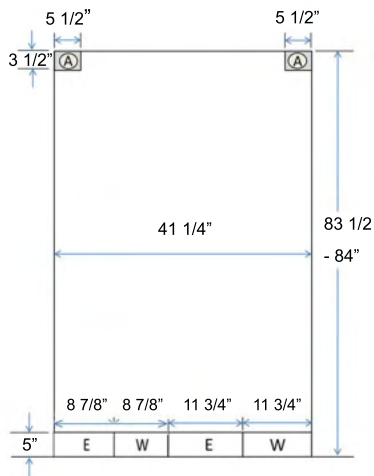
- BIFP30 models
- BIFP18 models



18" Column Freezer & 24" Column Refrigerator

Model(s):

- BIFP18 models
- BIRP24 models



JOINED COLUMN CUTOUT DIMENSIONS

- (A) Recommended cut-out height 83 1/2" - 84"
- (B) Dimensions shown are with rollers in minimum position as shipped.
Unit can be raised 1" max.
- (C) Cut-out must have a finished return of at least 3 1/2" from the front.

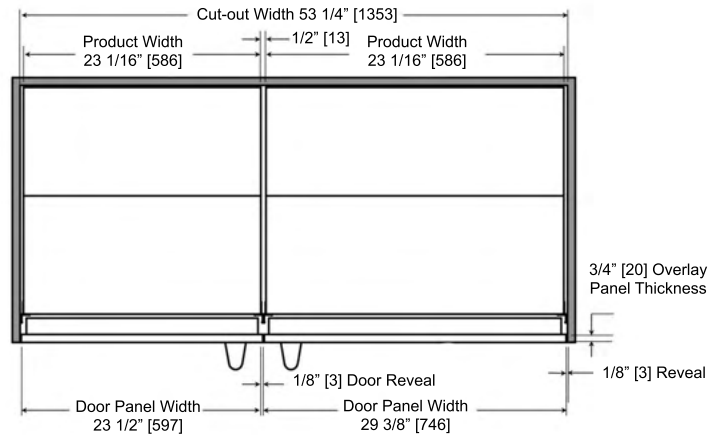
Notes:

- Dimensions shown in [] are in millimeters.
- Cut-out dimensions are shown in frameless cabinet installations. Refer to column refrigeration design guide for face frame cabinet cut-out dimensions.

Installation Dimensions:

Dimensions apply to the following model combinations:

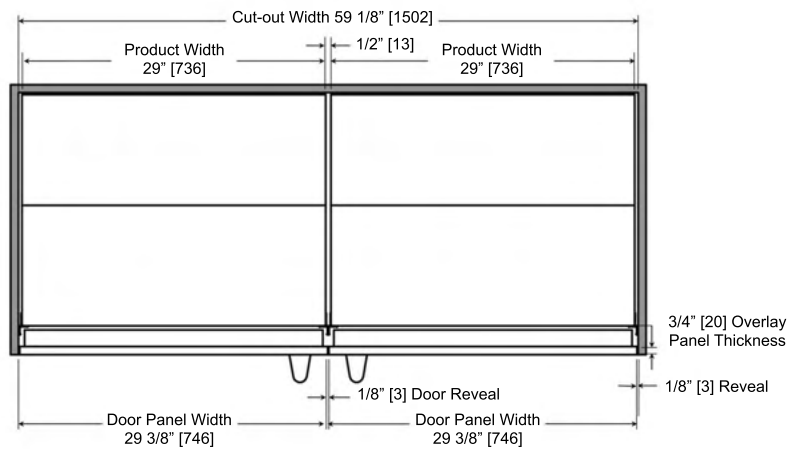
- 24" Unit Left Hinge and 30" Unit Right Hinge
- 30" Unit Left Hinge and 24" Unit Right Hinge



Installation Dimensions:

Dimensions apply to the following model combinations:

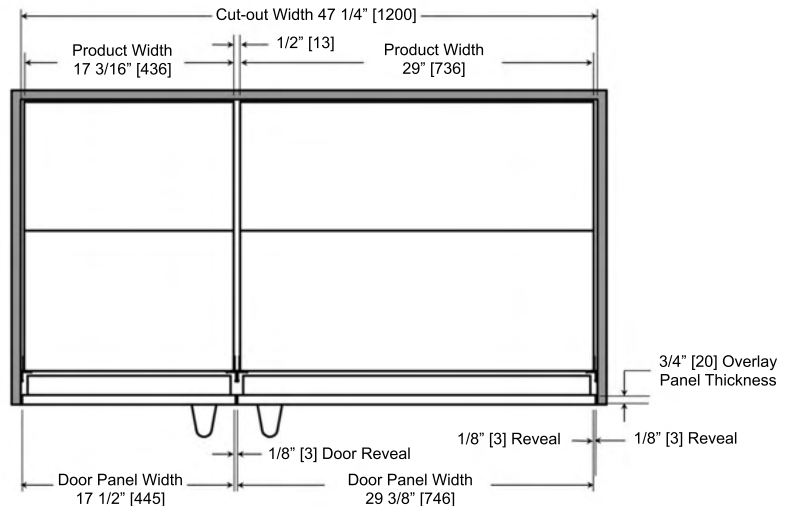
- 30" Unit Left Hinge and 30" Unit Right Hinge



Installation Dimensions:

Dimensions apply to the following model combinations:

- 18" Unit Left Hinge and 30" Unit Right Hinge
- 30" Unit Left Hinge and 18" Unit Right Hinge



JOINED COLUMN CUTOUT DIMENSIONS

- (A) Recommended cut-out height 83 1/2" - 84"
- (B) Dimensions shown are with rollers in minimum position as shipped.
Unit can be raised 1" max.
- (C) Cut-out must have a finished return of at least 3 1/2" from the front.

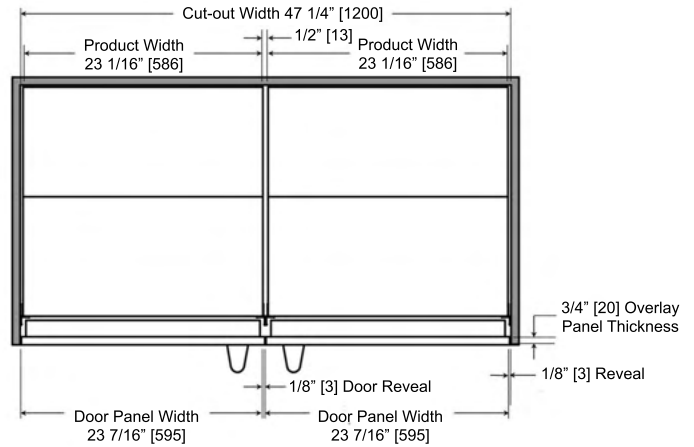
Notes:

- Dimensions shown in [] are in millimeters.
- Cut-out dimensions are shown in frameless cabinet installations. Refer to column refrigeration design guide for face frame cabinet cut-out dimensions.

Installation Dimensions:

Dimensions apply to the following model combinations:

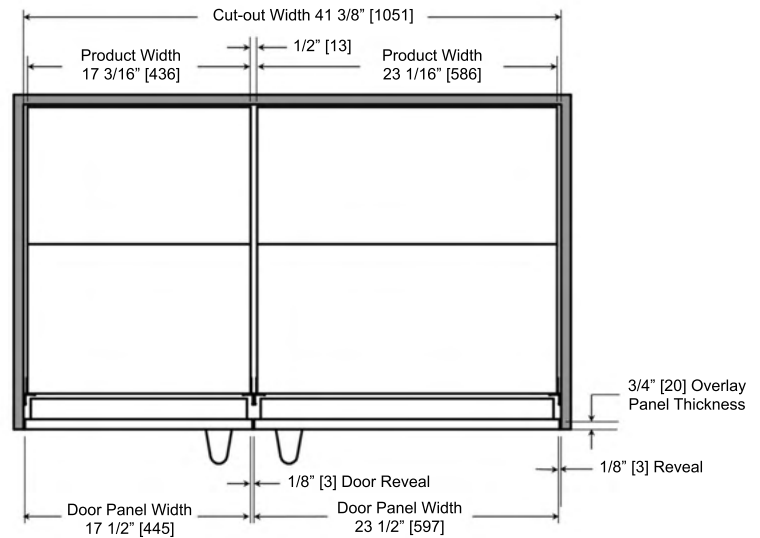
- 24" Unit Left Hinge and 24" Unit Right Hinge



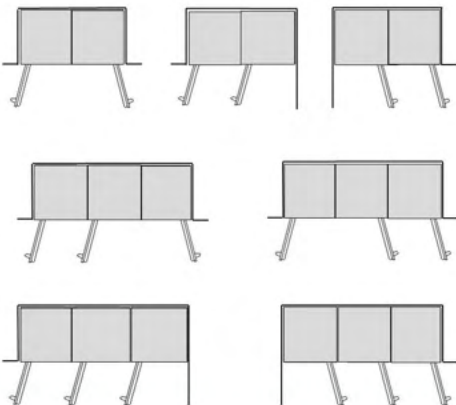
Installation Dimensions:

Dimensions apply to the following model combinations:

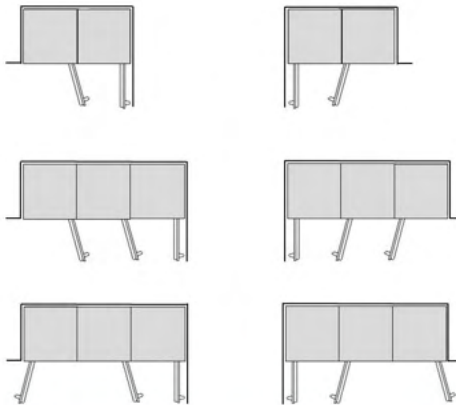
- 18" Unit Left Hinge and 24" Unit Right Hinge
- 24" Unit Left Hinge and 18" Unit Right Hinge



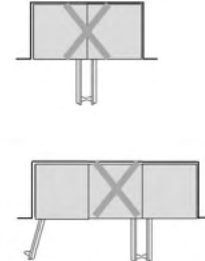
Recommended Installations for Standard Door Swing:



Recommended Installations Requiring 90 Degree Hinges:



Not Recommended Installations:



PANEL DETAIL

CUSTOM PANEL DETAIL:

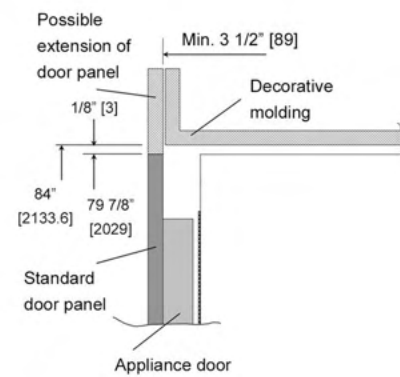
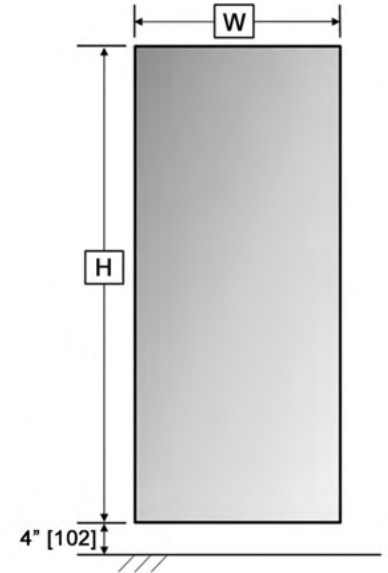
Each panel-ready BlueStar Column appliance is designed to be equipped with a decorative door panel. The table below illustrates the dimensions to be used as a guide in creating custom panels. At 79 7/8" (2029 mm) tall, they are designed for a toe-kick height of 4" (102 mm), and a total cutout height of 84" (2134 mm) yielding 1/8" (3 mm) reveals. At 3/4" (19 mm) deep, they are designed to attach to the 24 1/4" (616 mm) deep appliance for an overall depth of 25" (635 mm). Maximum allowed panel thickness is 1-1/8" (29 mm). 3/4" thick stainless and painted stainless panels with BlueStar handles can be purchased through BlueStar.

If the cabinet panels to be installed on panel ready units are of a rail and stile panel design, the location of mounting bracket hardware must still be 3/4" thick. A minimum vertical stile width of 3" on either side edge of the panel is recommended.

Description	H	W (1)	W (2)	Max. Panel Weight
30" Single Column	79 7/8" [2029]	29 3/8" [746]		75 lb each (34 kg)
18" & 30" Joined Columns	79 7/8" [2029]	17 1/2" [445]	29 3/8" [746]	75 lb each (34 kg)
24" & 30" Joined Columns	79 7/8" [2029]	23 1/2" [597]	29 3/8" [746]	75 lb each (34 kg)
30" & 30" Joined Columns	79 7/8" [2029]	29 3/8" [746]	29 3/8" [746]	75 lb each (34 kg)

Description	H	W (1)	W (2)	Max. Panel Weight
24" Single Column	79 7/8" [2029]	23 3/8" [594]		75 lb each (34 kg)
24" & 18" Joined Columns	79 7/8" [2029]	23 1/2" [597]	17 1/2" [445]	75 lb each (34 kg)
24" & 24" Joined Columns	79 7/8" [2029]	23 7/16" [595]	23 7/16" [595]	75 lb each (34 kg)
24" & 30" Joined Columns	79 7/8" [2029]	23 1/2" [597]	29 3/8" [746]	75 lb each (34 kg)

Description	H	W (1)	W (2)	Max. Panel Weight
18" Single Column	79 7/8" [2029]	17 1/2" [445]		75 lb each (34 kg)
18" & 24" Joined Columns	79 7/8" [2029]	17 1/2" [445]	23 1/2" [597]	75 lb each (34 kg)
18" & 30" Joined Columns	79 7/8" [2029]	17 1/2" [445]	29 3/8" [746]	75 lb each (34 kg)



3/4" THICK STAINLESS AND PAINTED PANEL ACCESSORY DIMENSIONS

Item	Description	H	W	Weight
CP18	18" Stainless Panel	79 7/8" [2029]	17 1/2" [445]	26 lb
CP24	24" Stainless Panel	79 7/8" [2029]	23 3/8" [594]	32 lb
CP30	30" Stainless Panel	79 7/8" [2029]	29 3/8" [746]	40 lb

CONTINUOUS TOEKICKS:

Continuous toekick grilles are available as sales accessories in the following sizes:

- 42" Model: #950363 (Stainless Steel) or #950363C (Painted)
- 48" Model: #950362 (Stainless Steel) or #950362C (Painted)
- 54" Model: #950361 (Stainless Steel) or #950361C (Painted)
- 60" Model: #950360 (Stainless Steel) or #950360C (Painted)

JOINING KITS:

A joining kit ships standard with all freezer units for side-by-side refrigeration and freezer installations. The kit includes:

- Filler strip to conceal joint between column units

Joining Kits (#700523) for side-by-side refrigerator only unit installs sold separately.

90 DEGREE PINS:

Must be specified at time of purchase and cannot be added at a later time. All drawers will still fully extend with 90 degree pins installed.

ACCESSORIES: DUAL FUEL HANDLE / HANDLE ENDS

Column units can be shipped with BlueStar Dual Fuel Range handles and handle ends.



48" Continuous To Kick - Stainless Clad Column

CONFIGURATIONS:

Right Swing Model Plus Stainless Door Panel Assembly:

BIRP30R0	Panel Ready
CP30RH2	Right Door Panel Stainless Steel Dual Fuel Trim
CP30RH2PLT	Right Door Panel Stainless Steel Plated Trim
CP30RH2C	Right Door Panel Std RAL Color Dual Fuel
CP30RH2CPLT	Right Door Panel Std RAL Color Plated Trim
CP30RH2CF	Right Door Panel Specialty Finish Dual Fuel
CP30RH2CFPLT	Right Door Panel Specialty Finish Plated Trim
CP30RH2CC	Right Door Panel Custom Color Dual Fuel
CP30RH2CCPLT	Right Door Panel Custom Color Plated Trim

Left Swing Model Plus Stainless Door Panel Assembly:

BIRP30L0	Panel Ready
CP30LH2	Left Door Panel Stainless Steel Dual Fuel Trim
CP30LH2PLT	Left Door Panel Stainless Steel Plated Trim
CP30LH2C	Left Door Panel Std RAL Color Dual Fuel Trim
CP30LH2CPLT	Left Door Panel Std RAL Color Plated Trim
CP30LH2CF	Left Door Panel Specialty Finish Dual Fuel Trim
CP30LH2CFPLT	Left Door Panel Specialty Finish Plated Trim
CP30LH2CC	Left Door Panel Custom Color Dual Fuel Trim
CP30LH2CCPLT	Left Door Panel Custom Color Plated Trim

TOE KICK GRILL:

A forced air system assures ventilation through a grill positioned in the lower front part of the unit. Each BlueStar Column comes with a 8-1/2" (216 mm) high stainless steel grill. A custom-made toe kick that matches the surrounding cabinetry may be applied instead. It must be designed to maintain a satisfactory air flow, as described in the drawing below.

Important:

Please recall that a panel should be installed at a minimum height of 4" (102 mm) from the floor to allow proper ventilation of the appliance. If required by the surrounding cabinetry design, the distance between the bottom edge of the door panel and the floor can be increased from approx. 4" (102 mm) up to 7-3/4" (197 mm) but should not be decreased. The minimum height of the custom door panel on the refrigerator above must be 76 1/8" high in order to conceal the actual door of the unit.

If using a custom Toe Kick Grill, the Toe Kick Grill must allow for a minimum open area of at least 50% of the area defined by the dimensions "A" / "E" and "B" below. The custom Toe Kick Grill may be attached using a fastening method deemed appropriate by the cabinet manufacturer/installer. Note: The Toe Kick Grill must provide adequate airflow as outlined above in order to ensure proper functionality of the appliance. It is imperative that the Toe Kick Grill remain unblocked to ensure proper functionality of the appliance and should be removable to allow for servicing and condenser cleaning.

	Figure 1	Figure 2		
	30"	30" + 18"	30" + 24"	30" + 30"
A	27 15/16" [710]	27 15/16" [710]	27 15/16" [710]	27 15/16" [710]
B	> 4" [100]			
C	3/8" [10]			
D	29 3/8" [747]	47" [1194]	53" [1346]	58 7/8" [1495]
E		16 1/8" [410]	22" [559]	27 15/16" [710]

	Figure 1	Figure 2		
	24"	24" + 18"	24" + 24"	24" + 30"
A	22" [559]	22" [559]	22" [559]	22" [559]
B	> 4" [100]			
C	3/8" [10]			
D	23 3/8" [594]	41 1/8" [1044]	47" [1194]	53" [1346]
E		16 1/8" [410]	22" [559]	27 15/16" [710]

	Figure 1	Figure 2	
	18"	18" + 24"	18" + 30"
A	16 1/8" [410]	16 1/8" [410]	16 1/8" [410]
B	> 4" [100]		
C	3/8" [10]		
D	17 1/2" [444.5]	41 1/8" [1044]	47" [1194]
E		22" [559]	27 15/16" [710]

